



Pop Shop Radio
Hope, British Columbia, Canada



EMAIL to: radiopopshop@gmail.com

WEBSITE: <http://www.popshopradio.ca>

Programme Schedule April and May 2024

FOR EUROPE ON



FOR THE AMERICAS ON



What is Pop Shop Radio...

At Pop Shop Radio we go around the world to bring you great stuff from all over. We play a whole variety of pop music, such as records from the 1960s and 1970s that were played on Top-40 radio stations in not only in North America but also on offshore radio and stations like Radio Luxembourg. To make it fun, we also include stuff that didn't make the Top 10. We like to show that music doesn't have to be in English to be great. Stopping off in places like Sweden, Finland, the Czech and Slovak Republics, Germany, France, Brazil, South Africa, Australia, and New Zealand we find cool records for you to groove to! We mix it all in the style of Top-40 radio of the 1960s and 1970s with jingles and real records played by a real DJ. We are everything that the boring FM corporate stations that have no personality and say they play the best variety are not. Last, but not least, Pop Shop Radio is made in the town of Hope in (super, natural) British Columbia in Canada. We are Canada's international voice to the world.

Programme Schedule April & May 2024

REGULAR SHOWS – a mix of pop music from all over the world including non-hits, non-English versions, and records from as far back as the 1930s



SERVICE FOR EUROPE

Channel 292: on 3955 and 9670 khz on WEDNESDAY
AT 1600 UTC and SATURDAY AT 2100 UT

Shortwave Gold: 3975 and 6160 khz on Sunday AT 1900 UTC Gold:
3975 and 6160 khz on Sunday AT 1900 UTC



SERVICE FOR THE AMERICAS

Americas Service via WRMI on 5950 khz

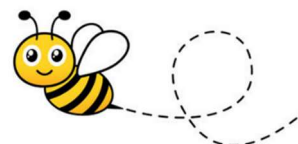
SUNDAY 2100 US Eastern Time (0100 UTC Monday)



You can now follow us on Twitter for the latest schedule changes and announcements:
[@popshopradio1](https://twitter.com/popshopradio1)

A SW Radiogram image will be sent in all shows starting at around minute 55

SPECIAL SHOWS: Each one with a different theme



B-Sides!

3955 khz and 9670 khz both non-directional via Channel 292: 17 April at 1600 UTC and 20 April at 2100 UTC

5950 khz to the Americas via WRMI: 21 April at 2100 US Eastern Time (0100 Monday UTC)

The 50s!

3955 khz and 9670 khz both non-directional via Channel 292:
15 May at 1600 UTC and 18 May at 2100 UTC

5950 khz to the Americas via WRMI: 19 May at 2100 US Eastern Time (0100 Monday UTC)



Note: time and frequencies subject to change. See www.popshopradio.ca or
www.channel292.de or www.wrmi.net for updates!